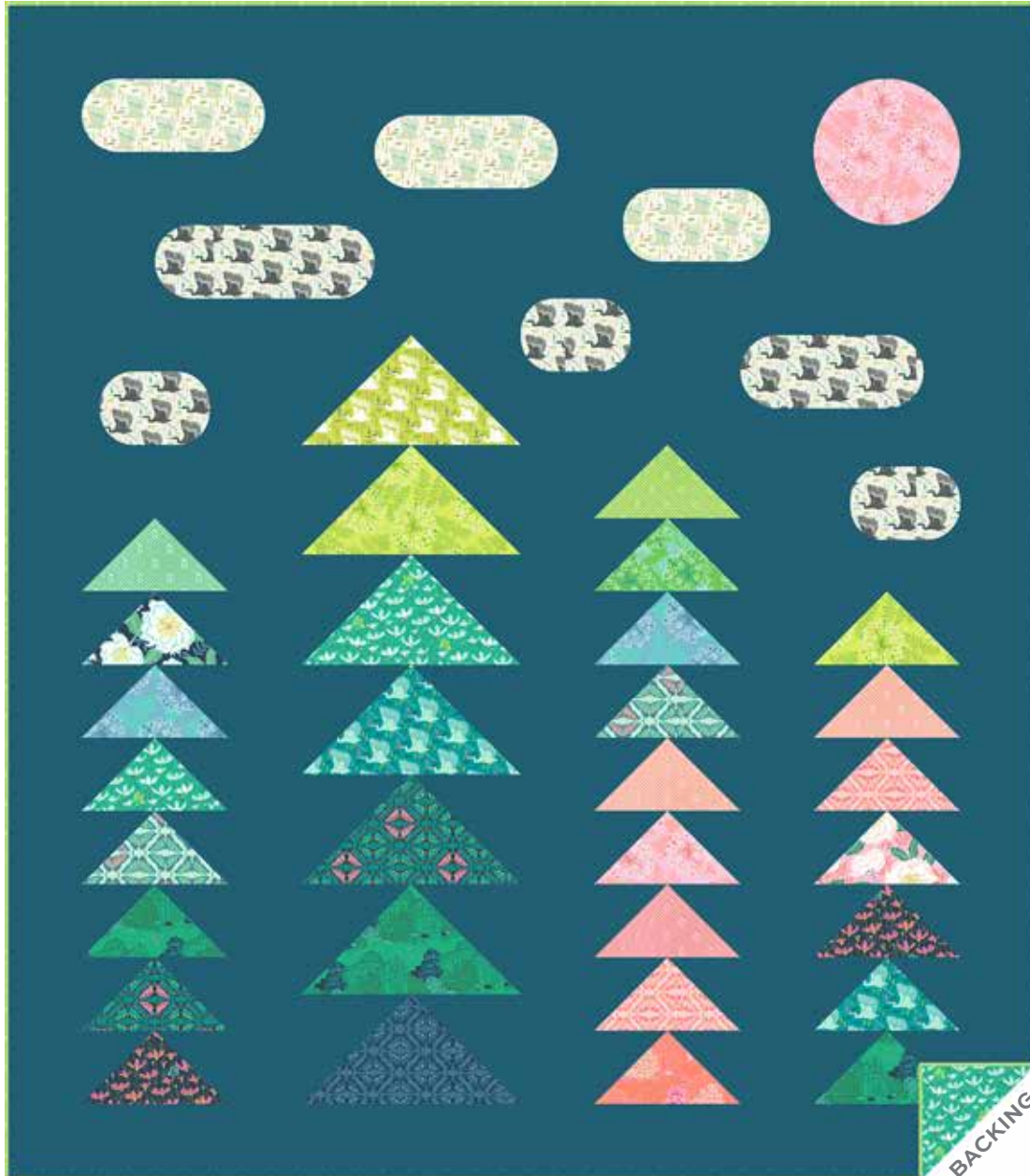


# Flora and Fauna

PATTY SLONIGER



100  
years



Trailblazer Quilt designed by: **Patty Sloniger**  
Quilt Size: **64" x 64"** • Skill Level: **Intermediate**

andover • [makower uk](http://makower.uk)

Free Pattern Download Available

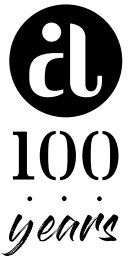
1384 Broadway New York, NY 10018  
Tel. (800) 223-5678 • [andoverfabrics.com](http://andoverfabrics.com)

8/15/21

# Trailblazer Quilt

Introducing Andover Fabrics new collection: **FLORA AND FAUNA** by Patty Sloniger

Quilt designed by Patty Sloniger



Quilt finishes 70" x 80"

7 Large Flying Geese: 7½" x 15"

24 Small Flying Geese: 5" x 10"

*Luscious large- and small-scale prints enhance this twin-size comforter. The Flying Geese blocks are quick to piece, and the floating shapes are easily appliquéd or fused. Yardage is sufficient to mix up the prints as you like.*

## Fabric Requirements

	Yardage	Fabric			
<b>Fabric A</b>	blocks	¾ yard	9994 E		
<b>Fabric B</b>	appliqué	¾ yard	9996 C		
<b>Fabric C</b>	appliqué	fat ¼ yard	9996 L		
<b>Fabric D</b>	blocks	fat ¼ yard	9993 G		
<b>Fabric E</b>	backgrd.	5½ yards	CS-10 Lagoon		
<b>4 fat ¼s</b>	blocks	fat ¼ yard each			
	9994 V	**9995 T	9996 T	9997 T	
<b>7 Prints</b>	blocks	fat ⅛ yard each			
	9992 B	9992 E	9993 O	9994 G	
	9998 E	9998 G	*9998 V		
<b>5 Prints</b>	blocks	fat ⅛ yard each			
	9994 B	9995 B	9997 EO		
	9997 TE	9998 O			
<b>2 Prints</b>	blocks	fat ⅛ yard each			
	9996 V	9997 B			
<b>Binding</b>	⅝ yard	*9998 V			
<b>Backing</b>	5 yards	**9995 T			

## Cutting Directions

**Note:** Read assembly directions before cutting patches. All measurements are cut sizes and include ¼" seam allowances. A fat ⅛ is a 9" x 21"-22" cut of fabric. A fat ¼ is an 18" x 21"-22" cut. WOF designates the width of fabric from selvedge to selvedge (approximately 42" wide).

### Fabric A

Cut (1) circle 10½" diameter (10" for fusible)

Read Steps 5 and 6 before cutting appliqué patches.

Cut (1) rectangle 5½" x 10½" for small Flying Geese

### Fabric B

Cut (1) rectangle 5½" x 15½" (5" x 15") for appliqué  
(Read Steps 5 and 6 first.)

Cut (1) rectangle 5½" x 13" (5" x 12½") for appliqué

Cut (3) rectangles 5½" x 8" (5" x 7½") for appliqué

### Fabric C

Cut (2) rectangles 5½" x 13" (5" x 12½") for appliqué  
(Read Steps 5 and 6 first.)

Cut (1) rectangle 5½" x 10½" (5" x 10") for appliqué

### Fabric D

Cut (1) rectangle 8" x 15½" for large Flying Geese

Cut (2) rectangles 5½" x 10½" for small Flying Geese

### Fabric E

Cut (2) borders 5½" x 70½", cut lengthwise

Cut (1) rectangle 25½" x 35½"

Cut (1) rectangle 18" x 35½"

Cut (1) strip 5½" x 45½"

Cut (2) strips 5½" x 40½"

Cut (2) strips 5½" x 35½"

Cut (1) rectangle 13" x 20½"

Cut (1) rectangle 10½" x 20½"

Cut (14) squares 8" for large Flying Geese

Cut (48) squares 5½" for small Flying Geese

**4 Fat ¼s** From each:

Cut (1) rectangle 8" x 15½" for large Flying Geese

Cut (1) rectangle 5½" x 10½" for small Flying Geese

**7 Prints** From each:

Cut (1) rectangle 5½" x 10½" for small Flying Geese

**5 Prints** From each:

Cut (2) rectangles 5½" x 10½" for small Flying Geese

**2 Prints** From each:

Cut (1) rectangle 8" x 15½" for large Flying Geese

### Binding

Cut (8) strips 2½" x WOF for binding

### Backing

Cut (2) panels 39" x 88", pieced to fit quilt top  
with overlap on all sides

## Making the Quilt

1. Feel free to cut fewer or more rectangles from the various prints for the Flying Geese. The cutting listed makes the quilt shown. The large and small Flying Geese blocks are made with a simple stitch and flip method. Draw a diagonal line on the wrong side of each Fabric E 8" square. Place a marked square on one end of a print 8" x 15½" rectangle, right sides together. Sew on the marked line; trim away and discard excess fabric (Diagram 1). Press open. Repeat this process on the opposite end of the rectangle (Diagram 2) to make a Flying Geese block. Make 7 large Flying Geese blocks.

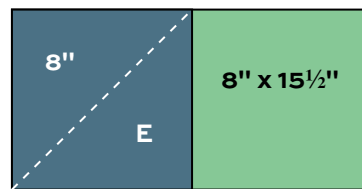


Diagram 1

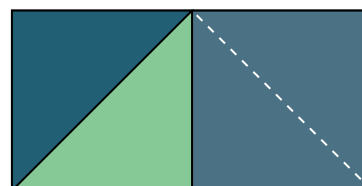
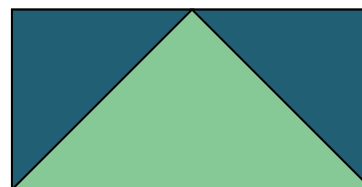
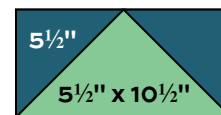


Diagram 2

2. Likewise, make 24 small Flying Geese blocks using 5½" x 10½" print rectangles and Fabric E 5½" squares.
3. Referring to the Quilt Diagram, arrange the Flying Geese blocks in vertical rows in the order shown or as you wish. Once you are satisfied with the order, join the blocks in rows.
4. Sew Fabric E strips to the sides of the Flying Geese rows as shown. Sew rectangles to the units as needed to make the quilt. Sew Fabric E borders to the top and bottom.
5. To prepare the patches for the appliquéd shapes at the top of the quilt, you need to decide whether you wish to fuse the patches or use traditional stitching methods.



Large Flying Geese – Make 7

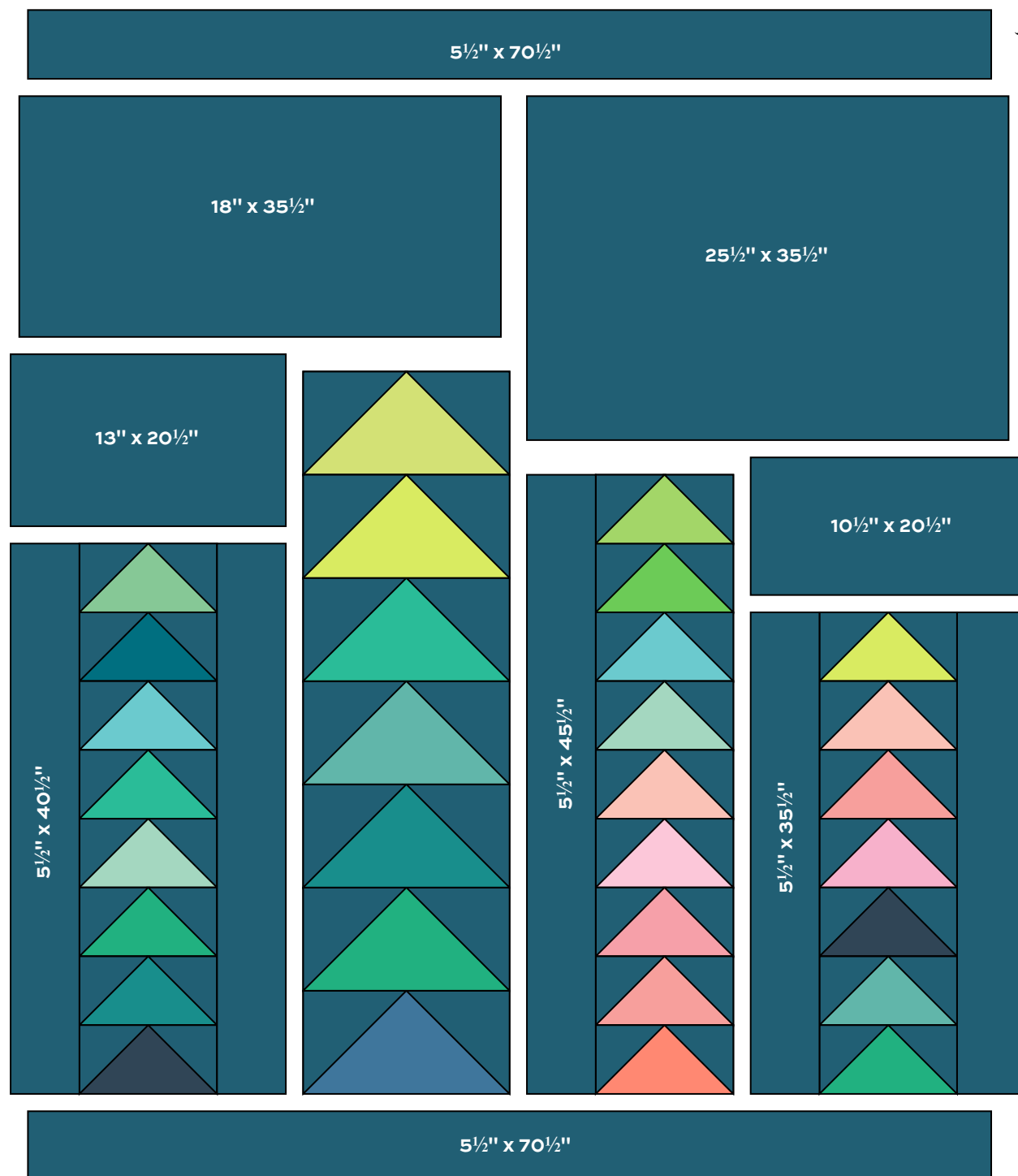


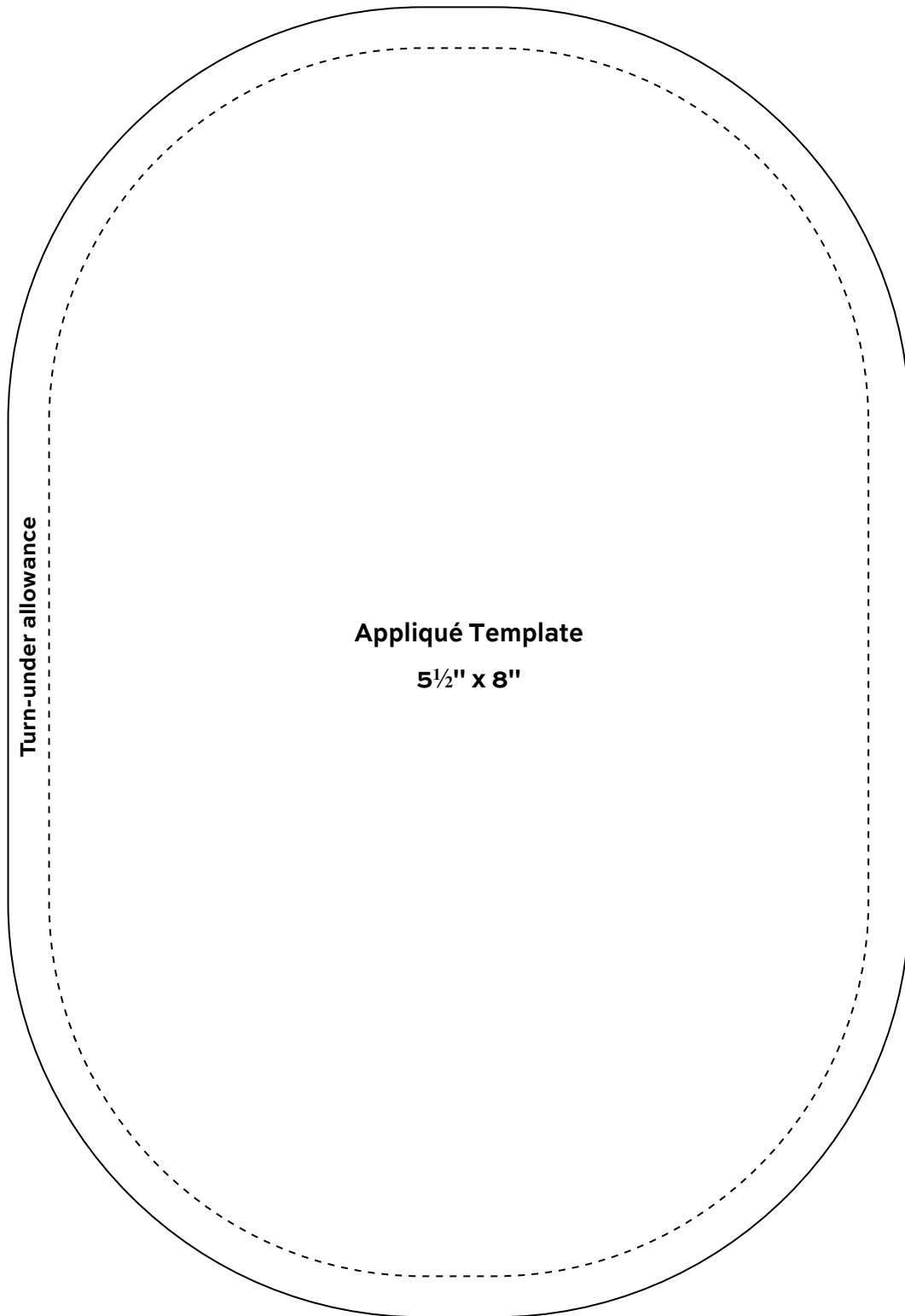
Small Flying Geese  
Make 24

- Traditional appliqué:** Cut the fabric rectangles listed for Fabrics A, B, and C using the larger measurements. Make a pattern of the Appliqué Template. Position the end of the pattern on the ends of each fabric rectangle and mark around each corner. Trim the corners. Turn under the allowance on each patch and press. Skip to Step 7.
6. **Fusible appliqué:** Draw rectangles on the paper side of fusible webbing using the smaller measurements given in Fabric A, B, and C lists above. Make a pattern of the Appliqué Template, trimming away the ¼" turn-under allowance on the pattern. Using the pattern, mark around each corner of the drawn rectangles. Following manufacturer's instructions, fuse the web rectangles to the wrong side of the appropriate fabrics. Cut out patches on the drawn lines. Remove the paper backing.
  7. Referring to the quilt photograph for positioning, arrange fabric patches across the top of the quilt. Finish the traditional appliqué using a machine straight stitch or hand stitches. Fuse, and finish the fusible patches with a decorative machine stitch using contrasting thread, or use an invisible thread with a blind appliqué machine stitch.

## Finishing the Quilt

8. Layer the quilt with batting and backing and baste. Quilt in the ditch around block patches and appliqué. Quilt the background as you wish. Or, quilt an overall pattern. Bind to finish the quilt.





# Flora and Fauna

PATTY SLONIGER



100  
years



9992 B



9992 E



9995 B



9993 G



9993 O



9995 T



9994 B



9994 G



9994 E



9994 V



9998 G



9996 C



9996 L



9996 T



9996 V



9998 E



9997 B



9997 EO



9997 T



9997 TE



9998 O



9998 V



CS-10 Lagoon

Blend with fabrics from  
Century Solids by Andover

All fabrics are used in quilt pattern.  
Fabrics shown are 50% of actual size.

andover

•  
• [makower.uk](http://makower.uk)  
•

Free Pattern Download Available

1384 Broadway New York, NY 10018  
Tel. (800) 223-5678 • [andoverfabrics.com](http://andoverfabrics.com)

8/15/21